



Nice to see you!



# Activities

WINTER 2011/2012

Activities

Page 2



Ski schools / sports shops

Page 10



Horse drawn sleigh rides

Page 11



Package deals / winter hikes

Page 12



Events

Page 14



Culinary delights

Page 16



Holiday ABC

Page 20



Ski bus timetable

Page 31



## WEEKLY SCHEDULE

### »»» MONDAYS «««

#### (N)ICE SURPRISE

ICE CURLING – ENJOY THIS PLEASANT SPORTING PASTIME WITH LOTS OF MERRIMENT OVER MUSIC AND MULLED WINE.

**Meeting place:** Katschberg skating rink, 8 pm.  
**Registration:** Please register by 5 pm on day before at the Katschberg or Rennweg tourism offices (tel. +43-4734-630 or 330) or at Otto's ski and snowboarding school (tel. +43-664-393-00-01).  
**Costs:** Admission free.

#### MONTÉ DAY

SHOWTIME WITH PATRIC MONTÉ

**Meeting place:** Schlössl.  
**Registration:** not required.  
**Costs:** Admission free.

### »»» TUESDAYS «««

#### OTTO'S SKI COACHING SENSATION

SPECIAL TRAINING SESSIONS FOR YOU TO PERFECT YOUR CARVING TECHNIQUE AND ENJOY UNBRIDLED FUN ON THE MOGULS AND OFF-PISTE SLOPES (DEPENDING ON SNOW CONDITIONS AND INDIVIDUAL PREFERENCES) INCLUDES VIDEO ANALYSIS. CAN ALSO BE BOOKED BY PRIOR ARRANGEMENT.

**Meeting place:** Otto's ski school office at "Haus Otto", next to the Wilderer Alm, 2 pm - 4 pm and by prior arrangement. Minimum number of participants: 4.  
**Registration:** Please register by 5 pm on day before at the Katschberg or Rennweg tourism offices (tel. +43-4734-630 or 330) or at Otto's ski and snowboarding school (tel. +43-664-393-00-01).  
**Costs:** EUR 21 per person. See weekly schedule for specific theme.

#### CHILDREN'S OTTOPHANTS PARTY

CHILDREN'S APRÈS-SKI WITH LOTS OF GAMES, FUN AND MUSIC AS WELL AS THE OTTOPHANTS. HOT DRINKS AND SWEET SURPRISES FOR EACH CHILD.

**Meeting place:** Otto's ski school office at "Haus Otto", next to the Wilderer Alm at 3 pm.  
**Registration:** Please register by 5 pm on day before at the Katschberg or Rennweg tourism offices (tel. +43-4734-630 or 330) or at Otto's ski and snowboarding school (tel. +43-664-393-00-01).  
**Costs:** Admission free.

#### SNOWSHOE HIKE

TO THE GAMSKOGELHÜTTE FOLLOWED BY TOBOGGANING

**Meeting place:** in the FRESCH:UP shop at 6 pm.  
**Registration:** Please register by 4 pm at the FRESCH:UP ski and sports centre. Tel.: +43-4734-29900-13 or write to skischule@erwinresch.at.  
**Costs:** EUR 19 including guide and equipment.

## WEEKLY SCHEDULE

#### TORCHLIT HIKE

FOLLOWED BY NIGHTTIME TOBOGGANING

**Meeting place:** At the FRESCH:UP shop, 6 pm.  
**Registration:** Please register by 6 pm at the FRESCH:UP ski and sports centre. Tel.: +43-4734-29900-13 or write to skischule@erwinresch.at.  
**Costs:** EUR 12 per person including torch and guide.

#### FIRE AND ICE

ENJOY A ROMANTIC TORCHLIGHT HIKE THROUGH THE SNOW-COVERED WINTER LANDSCAPE OF THE KATSCHBERG TO THE GAMSKOGELHÜTTE, FOLLOWED BY NIGHTTIME TOBOGGANING.

**Meeting place:** Otto's ski school office at "Haus Otto", next to the Wilderer Alm, at 8 pm. Minimum number of participants: 4.  
**Registration:** Please register by 5 pm on day before at the Katschberg or Rennweg tourism offices (tel. +43-4734-630 or 330) or at Otto's ski and snowboarding school (tel. +43-664-393-00-01).  
**Costs:** EUR 12 (including torch, toboggan and guide).

#### NIGHTTIME TOBOGGANING

TUESDAYS AND SATURDAYS FROM 5 PM TO 11 PM. YOU CAN HIRE TOBOGGANS AT THE GAMSKOGELHÜTTE; FLOODLIT TOBOGGANING RUN

**Meeting place:** Downhill run in front of the Gamskogelhütte.  
**Registration:** not required (available on request for groups of 25 people and over people, other days also possible).  
**Costs:** EUR 4 – toboggan hire fee.



## WEEKLY SCHEDULE

### »» WEDNESDAYS ««

#### OTTO'S SKISAFARI

WONDERFUL OFF-PISTE SLOPES (FOR SKIING AND SNOWBOARDING) IN THE GONTAL NATURE PARK THROUGH TO THE PRITZHÜTTE. THE UNIQUE BIO-LIFT TAKES YOU BACK TO THE PASSHÖHE. BRIEF TEST BEFOREHAND (AT OVER 2,000 M) WITH INTRODUCTION CARRIED OUT UNDER THE SUPERVISION OF STATE QUALIFIED SKIING INSTRUCTORS.

**Meeting place:** Otto's ski school office at "Haus Otto", next to the Wilderer Alm, at 2 pm. Minimum number of participants: 4.  
**Registration:** Please register by 5 pm on day before at the Katschberg or Rennweg tourism offices (tel. +43-4734-630 or 330) or at Otto's ski and snowboarding school (tel. +43-664-393-00-01).  
**Costs:** EUR 25 per person including guide and bio lift.

#### LIVE MUSIC IN THE SCHLÖSSL

AS OF 9 PM IN THE SCHLÖSSL

**Registration:** Not required.  
**Costs:** Admission free.

#### BBQ EVENING IN THE LÄRCHENSTADL

ALL YOU CAN EAT

**Registration:** Not required.  
**Costs:** Admission free.

### »» THURSDAYS ««

#### SNOWSHOE HIKE

STEP LIGHTLY THROUGH THE SNOW-COVERED WINTER LANDSCAPE OF THE KATSCHBERG! TAKES ABOUT 60-90 MINS.

**Meeting place:** Otto's ski school office at "Haus Otto", next to the Wilderer Alm, at 5 pm. Minimum number of participants: 4.  
**Registration:** Please register by 5 pm on day before at the Katschberg or Rennweg tourism offices (tel. +43-4734-630 or 330) or at Otto's ski and snowboarding school (tel. +43-664-393-00-01).  
**Costs:** EUR 15 including equipment and guide.

#### LIVE MUSIC IN THE LÄRCHENSTADL

**Meeting place:** As of 9.30 pm in the Lärchenstadl.  
**Registration:** Not required.  
**Costs:** Admission free.

#### FRIENDLY CARINTHIA VISITORS' RACES

**Meeting place:** Katschi's Children's World mountain terminal, 10 am.  
**Registration:** At the starting point, in the ski school office or call +43-4734-608.  
**Costs:** Entry fee: EUR 8 per person.

#### VISITORS' RACES AT THE KATSCHBERG SKI & SPORTS SCHOOL

**Meeting place:** Katschi's Children's World mountain terminal, 2 pm.  
**Registration:** Gottfried Krabath at the Katschberg ski & sports school. Call +43-4734-83881 or +43-664 25 27 345.  
**Costs:** on request

## WEEKLY SCHEDULE

### »» FRIDAYS ««

#### VISITORS' RACES AT OTTO'S SKI AND SNOWBOARDING SCHOOL

**Meeting place:** Katschi's Children's World mountain terminal, 10 am.  
**Registration:** At the starting point, in the ski school offices or call +43-664-393-00-01.  
**Costs:** Entry fee: EUR 5 per person.

#### FRESCH:UP VISITORS' RACES

FOR VISITORS NOT ATTENDING A SKI COURSE: EUR 10 INCLUDING MEDAL  
**Meeting place:** At the FRESCH:UP shop, 2 pm.  
**Registration:** Right up to the starting time at FRESCH:UP ski and sports centre. Call +43-4734-29900-13 or write to skischule@erwinresch.at.  
**Costs:** Entry fee: EUR 6 per person.  
 FREE for 1-week course participants!

### »» SATURDAYS ««

#### SNOWSHOE HIKE

TO THE GAMSKOGELHÜTTE FOLLOWED BY TOBOGGANING

**Meeting place:** at the FRESCH:UP shop, 8.30 pm.  
**Registration:** Please register by 4 pm at the FRESCH:UP ski and sports centre. Call +43-4734-29900-13 or write to skischule@erwinresch.at.  
**Costs:** EUR 19 including guide and equipment.

#### NIGHTTIME TOBOGGANING

TUESDAYS AND SATURDAYS FROM 5 PM TO 11 PM. YOU CAN HIRE TOBOGGANS AT THE GAMSKOGELHÜTTE; FLOODLIT TOBOGGANING RUN  
**Meeting place:** Downhill run in front of the Gamskogelhütte.  
**Registration:** not required (available on request for groups of 25 people and over people, other days also possible).  
**Costs:** EUR 4 – toboggan hire fee.

#### TORCHLIT HIKE

FOLLOWED BY NIGHTTIME TOBOGGANING  
**Meeting place:** At the FRESCH:UP Shop, 8.30 pm.  
**Registration:** Please reserve by 6 pm on the previous day at the Fresch:up ski and sports centre. Call +43-4734-299 00-13 or write to skischule@erwinresch.at.  
**Costs:** EUR 12 per person including torch and guide.



## DAILY WITH PRIOR REGISTRATION BY 5 PM ON PREVIOUS DAY

### TORCHLIT HIKE WITH TOBOGGANING

**Meeting place:** Ski and Sport School Katschberg Gottfried Krabath.  
**Registration:** Ski and Sport School Katschberg Gottfried Krabath.  
 Call+43-4734-83881 or +43-664 25 27 345.  
**Costs:** Please inquire.

### SNOWSHOE HIKE

**Meeting place:** Ski and Sport School Katschberg Gottfried Krabath.  
**Registration:** Ski and Sport School Katschberg Gottfried Krabath.  
 Call+43-4734-83881 or +43-664 25 27 345.  
**Costs:** Please inquire.

### SKI FAMILY DAY [E.G. 2 ADULTS AND 2 CHILDREN]

#### GET TO KNOW THE SKI AREA, 4 HOURS

**Meeting place:** Ski and Sport School Katschberg Gottfried Krabath.  
**Registration:** Ski and Sport School Katschberg Gottfried Krabath.  
 Call +43-4734-83881 or +43-664 25 27 345.  
**Costs:** Please inquire.

### SKI TOURS

**Meeting place:** Ski and Sport School Katschberg Gottfried Krabath.  
**Registration:** Ski and Sport School Katschberg Gottfried Krabath.  
 Call+43-4734-83881 or +43-664 25 27 345.  
**Costs:** Please inquire.

### GREAT SKI TOURS AROUND THE BONNER HÜTTE

#### TO THE ROMANTIC, SNOW-COVERED BONNER HÜTTE

**Meeting place:** Whenever you like, Bonner Hütte.  
**Registration:** Great ski tours available from the Carinthian and Salzburg side to and around the Bonner Hütte.  
 Bonner Hütte, Sigi Meissnitzer.  
 Call +43-676-510 21 14 or +43-664 162 45 28.  
**Costs:** Free.

### COUNTRY PLATTER, SPARE RIBS OR ALPINE FONDUE AT THE BONNER HÜTTE

#### SHEER ROMANCE BY CANDLELIGHT IN THE SNOW-COVERED LAUSSNITZTAL

**Meeting place:** Bonner Hütte (taxi shuttle also available on request. Please reserve).  
**Registration:** Bonner Hütte, Sigi Meissnitzer, call +43-676-510 21 14 or +43-664 162 45 28.  
**Costs:** EUR 17 per person: Country platter.  
 EUR 12 per person: Spare ribs.  
 EUR 27 per person: Alpine fondue.

### TOBOGGANING AND SNOWSHOE HIKING AT THE BONNER HÜTTE

**Meeting place:** Bonner Hütte  
 (taxi shuttle also available on request. Please reserve).  
**Registration:** Bonner Hütte, Sigi Meissnitzer, call +43-676-510 21 14 or +43-664 162 45 28.  
**Costs:** Please inquire.

## DAILY WITH PRIOR REGISTRATION BY 5 PM ON PREVIOUS DAY

### SNOW TUBING AT THE BONNER HÜTTE AND CROSS-COUNTRY SKIING AT THE BONNER HÜTTE

**Meeting place:** Bonner Hütte (taxi shuttle also available on request. Please reserve).  
**Registration:** Bonner Hütte, Sigi Meissnitzer, call +43-676-510 21 14 or +43-664 162 45 28.  
**Costs:** Free.

### TELEMARK WORKSHOP

THE TELEMARK SKIING TECHNIQUE ORIGINATED IN NORWAY. THE SKIER FLEXES THE KNEE ON THE UPHILL SKI BY RAISING THE HEEL OF THE BACK FOOT AND PULLING THE DOWNHILL SKI FORWARD.

**Meeting place:** Hotel Cristallo assembly point.  
**Registration:** Cristallo ski school office – call +43-4734-319 515.  
**Costs:** Please inquire.

### ADVENTURE PARK

#### OPEN IN WINTER

**Meeting place:** Hotel Cristallo.  
**Registration:** Falkensteiner snow sports school office.  
 Hotel Cristallo: 04734 319 515.  
 Hotel Funimation: 04734 631 909. Mobile: 0676 63 70970.  
**Costs:** EUR 20 per person.

### INTRODUCTION TO CROSS-COUNTRY SKIING NORDIC WALKING

**Registration:** Details are available from the Katschberg or Rennweg tourism offices. Call +43-4734-630 or 330.  
**Costs:** Please inquire.

NEU AB WINTER 2011/2012

**SILVER JET 2**

Mehr Schi am Katschi!

Schivergnügen von 1.066 bis 2.220 m • [www.katschi.at](http://www.katschi.at)

## TAILORED OFFERS REQUIRING PRIOR REGISTRATION

### TORCHLIT HIKE

TO THE ROMANTIC, SNOW-COVERED BONNER HÜTTE

**Meeting place:** Frankenberg above Rennweg.  
**Registration:** Bonner Hütte, Sigi Meissnitzer, call +43-676-510 21 14 or +43-664 162 45 28.  
**Costs:** Please inquire.

### FRESCH:UP SKI RALLYE

A THRILLING ALL-DAY SKI RALLY IN THE SKI REGION

**Meeting place:** At the FRESCH:UP shop.  
**Anmeldung:** FRESCH:UP, ski and sports centre;  
 tel : +43-4734-299 00-13 or  
 write to skischule@erwinresch.at.  
**Kosten:** EUR 39 per person.

### WITH GPS THROUGH SNOW AND ICE TO THE TREASURES OF THE KATSCHBERG

WE'LL BE USING MODERN GPS EQUIPMENT TO TAKE US THROUGH THE SNOW OF THE ENCHANTING WINTER LANDSCAPE IN SEARCH OF THE RIGHT TRAILS LEADING TO OUR TREASURES (FOR CHILDREN AND GROWN-UPS).

**Meeting place:** At the FRESCH:UP shop.  
**Registration:** FRESCH:UP, ski and sports centre;  
 tel : +43-4734-299 00-13 or  
 write to skischule@erwinresch.at.  
**Kosten:** EUR 12. Min. 4 people required, about 2 hours.

### HORSE DRAWN SLEIGH RIDE

DAILY HORSE DRAWN SLEIGH RIDE THROUGH THE GONTAL

**Meeting place:** daily at 11 am, 12.30 pm, 2 pm, 3.30 pm, 5 pm, 6.30 pm, 8 pm / Katschberg village square.  
**Registration:** Call driver Andreas Neuschitzer directly on +43-664-284-45-83 or contact the Katschberg or Rennweg tourism offices (tel. +43 4734-630 or 330) or contact your hotel reception desk.  
**Costs:** Adults EUR 22 (daytime); EUR 25 (night time – from 5 pm) Children below the age of 3 ride for free; 50% discount for 3–15 year olds. Private sleigh, daytime: EUR 130, night time: EUR 150. Group prices available on request.

### HORSE RIDING

(INDOOR ARENA AND OUTDOORS)

**Meeting place:** Katschberg horse riding centre.  
**Registration:** Call driver Andreas Neuschitzer directly on +43-664-284-45-83 or contact the Katschberg or Rennweg tourism offices (tel. +43 4734-630 or 330) or contact your hotel reception desk.  
**Costs:** Single lesson: EUR 20 per person.  
 One-week course (5 sessions): EUR 95 per person.

## DAILY ACTIVITIES WITHOUT PRIOR REGISTRATION

### ICE SKATING

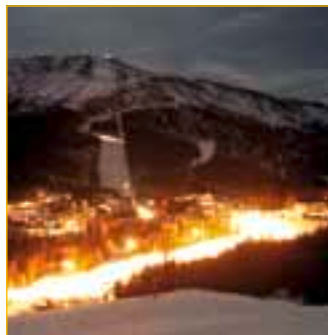
**Meeting place:** Katschberg: behind the tourism office. Rennweg: school sports ground. The ice skating rink on the Katschberg (floodlit until 10 pm) or in Rennweg can be used daily.  
**Registration:** Not required.  
**Costs:** Free.

### NIGHTTIME SKIING ON THE KÖNIGSWIESE

5 Dec 2011 to 25 Dec 2011 – Thursdays  
 26 Dec 2011 to 8 Jan 2012 – Mondays and Thursdays  
 9 Jan 2012 to 29 Jan 2012 – Thursdays  
 30 Jan 2012 to 26 Feb 2012 – Mondays and Thursdays  
 27 Feb 2012 to 8 Apr 2012 – Thursdays  
**Meeting place:** Königswiese, skiing from 7 pm to 10 pm.  
**Registration:** Not required.  
**Costs:** Free with valid ski pass.

### TOBOGGANING / KATSCHBERG

ENJOY GOING ON THE 1.5 KM LONG TOBOGGANING RUN ON THE KATSCHBERG EVERY DAY. STARTS FROM THE GAMSKOGELHÜTTE. NIGHTTIME TOBOGGANING ON TUESDAYS AND SATURDAYS FROM 5 PM TO 11 PM.  
**Registration:** not required (available on request for groups of 25 people and over, other days also possible).  
**Costs:** EUR 4 – toboggan ski hire.



## Ski & snowboarding schools:

### FRESCH:UP Sports and Ski School Centre

Katschberghöhe 37, 9863 Rennweg  
tel.: +43 (0) 4734-29900-13, daily 8:30-18 Uhr  
e-mail: skischule@erwinresch.at  
Internet: www.erwinresch.at



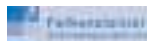
### Otto's Ski and Snowboarding School

A - 5582 Katschberg 330  
Internet: www.schischul.info  
e-mail: otto@schischul.info, tel & fax: +43-4734-8244  
Mobile: +43-664-393-00-01 • Open daily from 8 am to 5 pm.



### Falkensteiner Snow Sports School

A - 9863 Katschberghöhe 20  
Please register at Falkensteiner Club Funimation and Hotel Cristallo. tel: +43/(0)4734-319 515  
Internet: www.schneesportschule-falkensteiner.com  
e-Mail: snowsport@falkensteiner.com



### Friendly Carinthia Ski and Snowboarding School

Katschberg 24, A - 9863 Katschberg  
Internet: www.skischule-katschberg.com  
e-mail: info@skischule-katschberg.com  
tel: +43-4734-608, fax: +43-4734-608 4



### Ski and Sport School Katschberg

Gottfried Krabath  
A - Katschberghöhe 30  
tel: +43-4734-83881 oder +43-664 25 27 345  
Email: info@skischule-krabath.at  
Internet: www.katschberg-skischule.at  
Open daily from 9 am to 6 pm.



### Montekatsch Wedel School

Private ski school specialised in private skiing instruction.  
tel: +43 664 3933 876  
e-mail: wedelschule@montekatsch.at  
Internet: www.montekatsch.at



## Sports shops:

### Boutique Creativ

tel: +43-4734-608  
• children's, ladies' & men's clothing  
• sports articles for sale and hire  
• souvenirs & small gifts to take home with you



### Sport Friedrich

tel: +43-4734-470  
Internet: www.sbg.at/sport-friedrich/



### Sport Erni

Tel: +43-4734-320 Email: info@sport-erni.at  
Internet: www.sport-erni.at,  
...the shop with a difference, where personal guidance and advice is still written large!  
• exclusive sports and leisure clothing.  
• hire and test out skis and boots.  
• ski and snowboard servicing – well worth a visit.



### FRESCH:UP ski and sports centre

Katschberghöhe 37, 9863 Rennweg  
Tel.: +43 (0) 4734-29900  
Email: sports@erwinresch.at Internet: www.erwinresch.at  
Sports shop, ski hire, ski school and ski sales, open daily 8.30 am-6 pm.



### Sports shop

Ski and Sport School Katschberg  
Gottfried Krabath,  
A - Katschberghöhe 30 - Tel: +43-4734-83881 oder +43-664 25 27 345  
Email: info@skischule-krabath.at - www.katschberg-skischule.at  
Open daily from 9 am to 6 pm.



### SPORT SCHIFFER

just passionate about the great outdoors!  
Rennweg 6 - 9863 Rennweg - T. +43(0)664-35 26 306  
info@sportschiffer.at - www.sportschiffer.at  
We offer innovative schedules of activities in both summer and winter. With its hire facilities and service, our sports shop really leaves nothing to be desired. Top quality at very attractive prices! Open:  
Mon - Fri, 8 am - 12 noon & 2 pm - 6 pm, Sat, 8 am - 12 noon only.



## Horse drawn sleigh rides

### Katschberg:

Romantic horse drawn sleigh ride through the Gontal nature reserve to the Pritzhütte on the Katschberg. Daily rides at 11 am, 12.30 pm, 2 pm and 3.30 pm (subject to prior reservation by calling +43-664-284-45-83. Alternatively, contact the Katschberg / Rennweg tourism offices or your hotel reception desk). Private sleighs available on request. Night time rides: 5pm, 6.30pm and 8pm.

**Prices:** Daytime EUR 22 per adult, EUR 25 per adult from 5 pm. Free for children below the age of 3, 50% discount for children aged 3-15, group rates available on request, private sleighs day and night EUR 130 (max. 7 people allowed).

**Email:** info@pferdezentrum-katschberg.at  
**Internet:** www.pferdezentrum-katschberg.at

## KATSCHBERG SKI OPENING 3- 23 Dec 2011 (final arrival date: 20 Dec 2011)

### All inclusive features:

- 3 nights in your choice of accommodation
- 2-day Carinthia-East Tyrol top gold ski pass

### TOP PRICE / PP

**EUR 115,-** in a holiday apartment in Rennweg am Katschberg (minimum occupancy: 4 persons).

**EUR 140,-** in a B&B incl. breakfast in Rennweg am Katschberg.

**EUR 166,-** in an inn incl. half-board in Rennweg am Katschberg.

**EUR 250,-** in a 4-star hotel incl. half-board on the Katschberg.

## WEEKDAY WEDEL DEAL

15-19 Jan 2012 and 22-26 Jan 2012

### All inclusive features:

- 4 nights in your chosen category from Sun to Thu
- 3-day Carinthia-East Tyrol top gold ski pass

### TOP PRICE / PP

**EUR 140,-** in a holiday apartment in Rennweg am Katschberg (minimum occupancy: 4 persons).

**EUR 174,-** in a B&B incl. breakfast in Rennweg am Katschberg.

**EUR 229,-** in an inn incl. half-board in Rennweg am Katschberg.

**EUR 374,-** in a 4-star hotel incl. half-board on the Katschberg.

## SUPER SUNSHINE SKI HIT

3-31 Mar 2012

### All-inclusive features:

- 4 nights in your chosen category
- 3-day Carinthia-East Tyrol top gold ski pass

### TOP PRICE / PP

**EUR 140,-** in a holiday apartment in Rennweg am Katschberg (minimum occupancy: 4 persons).

**EUR 174,-** in a pleasant private guesthouse incl. breakfast in Rennweg am Katschberg.

**EUR 229,-** in an inn incl. half-board in Rennweg am Katschberg.

**EUR 374,-** in a 4-star hotel incl. half-board on the Katschberg.

## WINTER PLEASURE PACKAGE

Offer applies throughout the 2011/2012 winter season except for 24 Dec 2011 to 6 Jan 2012 and 29 Jan 2012 to 3 Mar 2012.

### Features include:

- 4 nights in your choice of accommodation
- 3-day gold ski pass

### TOP PRICE / PP

from **EUR 174,-** in a holiday apartment in Rennweg am Katschberg (minimum occupancy: 4 persons).

from **EUR 209,-** in a B&B incl. breakfast in Rennweg am Katschberg.

from **EUR 269,-** in an inn incl. half-board in Rennweg am Katschberg.

from **EUR 459,-** in a 4-star hotel incl. half-board on the Katschberg.

## Winter hiking

### • Katschberg winter hiking trail

from Landal along hiking trail 17. Very sunny, little wind. Wonderful views of Carinthia and the slopes of the Gamskogel lift. No vehicle traffic, no traverses of pistes.

**Please note:** not a circular trail, no refreshments stops, not suitable for prams.

### • Gamskogelhütte on the Katschberg – open daily

starts from the Katschberghöhe along the family tobogganing trail (access about 100 m after the Stamperl pizzeria), about 1.5 km to the Gamskogelhütte.

### • Pritzhütte in the Gontal – open daily

starts from the Katschberghöhe – about 4 km to the Pritzhütte.

### • Pöllatal nature and countryside reserve.

a 6 km long, wonderful winter hike against an impressive natural backdrop. Refreshments stop: Schoberblickhütte in the Pöllatal, closed Mondays.

### • Bonner Hütte – open daily

starts from Rennweg (about 8 km) or from Frankenberg – Laussnitz (approx. 3.8 km); can also be reached by car.

DATE	EVENT
<b>DECEMBER</b>	
Thu 1 December	<b>Season opening party</b> in the Lärchenstadl.
Mon 5 and Tue 6 December	<b>St. Nicholas and Krampus celebration.</b> Organised by Rennweg youth organisation.
Tue 6 December	<b>Advent market on the Katschberg village square.</b> 3-6 pm. Organised by regional tourism board.
Wed 7 December	<b>„Es werd scho glei dumpa“</b> Pre-Christmas concert performed by the Rennweg music school at 7 pm in the Kremsbrücke parish church.
Thu 8 December	<b>Katschberg – Celebratory opening of ski season.</b> Organised by Katschberg Cableways.
Sat 10 December	<b>Opening: “The hot meet” in Advent.</b> as of 3 pm at Gasthof Post.
Sun 11 December	<b>“Heading towards Christmas” at 1 pm in Gries.</b> Organised by Katschtal singers
Tue 13 December	<b>Advent market on Katschberg village square.</b> 3-6 pm. Organised by regional tourism board.
Sun 18 December	<b>Christmas matinee</b> with the pupils of the music school at 10.30 am at Gasthof Post.
Tue 20 December	<b>Advent market on Katschberg village square.</b> 3-6 pm. Organised by regional tourism board.
Sat 24 December	<b>Christmas celebrations on Katschberg village square.</b> as of 4 pm. Organised by regional tourism board. <b>Midnight Mass</b> at 11 pm in St. Peter’s parish church.
Mon 26 December	<b>Family church service followed by agape service</b> at 8.30 am in St. Georgen. <b>Elan ski test as of 9 am at the P3 car park (Katschberg).</b> Organised by Katschberg Cableways.
FRI 30 December	<b>Night time ice curling tournament. Starts 5 pm at the Rennweg ice skating rink.</b> Organised by the Rennweg branch of the Volkspartei.
SAT 31 December	<b>New Year’s Eve party</b> with live music as of 8.30 pm in the Stampertl.
<b>JANUARY</b>	
Sat 07 January	<b>Joint fire brigade ball at 8.30 pm at the Pirkerwirt.</b> Organised by local fire brigades in the municipality of Rennweg.
Sat 21 January	<b>Antenne Kärnten ski day as of 9 am.</b> Organised by Katschberg Cableways. <b>37th Katschtal Farmers’ Ball as of 8 pm at the Pirkerwirt.</b> Organised by Katschtal Farmers’ Association.
<b>FEBRUARY</b>	
Sat 11 February	<b>Singers’ masked ball as of 8.30 pm at the Pirkerwirt.</b> Organised by Katschtal church choir.
Sat 18 February	<b>Carnival procession in Rennweg.</b> Organised by SC Rennweg/Katschberg.
Mon 20 February	<b>20th Beggars’ Ball as of 8 pm at Gasthof Post.</b> Shrove Monday party in the Lärchenstadl.
Tue 21 February	<b>Mardi Gras party</b> in the Schlössl with live music.

## MARCH

Sat 10 March

**Antenne Steiermark family skiing day** starting 9 am at the Aineckbahn valley terminal.  
Organised by Katschberg Cableways and Antenne Steiermark.

Sat 31 March

**“Palm broom tying for children”** at the fire brigade building in Rennweg. Organised by Rennweg youth association.

## APRIL

Sun 1 April

**Palm Sunday procession and parish church service** at 8.15 am in St. Georgen followed by **Easter bazaar at the Zechner in St. Georgen.** Organised by traditional costume association.

Fri 13 April

**End of season party** in the Lärchenstadl.



## LIVE MUSIC IN DECEMBER 2011

**LÄRCHENSTADL - Live music as of 8 pm**  
on 1 Dec, 8 Dec, 15 Dec and 22 Dec 2011.

**WILDERER ALM - Live music as of 8 pm**  
on 3 Dec, 10 Dec and 17 Dec 2011.

**PIZZERIA STAMPERL - Live music as of 8 pm**  
on 2 Dec, 9 Dec, 16 Dec and 23 Dec 2011.

**HINTEREGGERS AINKEHR - Live music as of 8 pm**  
on 4 Dec, 11 Dec and 18 Dec 2011.

**HOTEL CRISTALLO - Live music as of 8 pm**  
on 12 Dec 2011 and 19 Dec 2011.

## KATSCHBERG/RENNWEG:

**Après-Ski** - Daily from 4 pm in all ski lodges.

### Stamperl – Pizza.Pasta.Burger.

Tel.: +43 4734 612

The modern place to be with the world's favourite dishes. Open daily from 3 pm. Après-ski with live DJ. Every Monday: Blue Monday (surprise). In the evening the venue is transformed into a stylish restaurant. Open daily, 8 am – midnight.



### Schlössl

Tel.: +43-664-160 11 94

Mondays: Monté day – show time with Patric Monté as of 10 pm.

Wednesdays: from 9 pm – live music and cocktails.



### Lärchenstadl

Tel.: +43-(0)664-260 54 20

Wide variety of themed evenings (fondue, hot stone evening).

Exquisite pizzas straight from our wood-fired oven!

From 9.30 pm: DISCO – Tuesdays: KARAOKE.

Wednesdays: BBQ evening – All you can eat.

Thursdays: Live music in the Lärchenstadl as of 9.30 pm.



### Adlerhorst – Himmel auf Erden

Tel.: +43 4734 284

A sensational experience at over 2,222 m above sea level by the Aineck lift! The highest ski hut on a summit in the Katschberg region tempts you with its superb panoramic views. Our guests are delighted by our choice of simple but sophisticated meals. Open daily from 10 am to 5 pm.



### Schneeflockerl

Tel.: +43-664-750 16 427

Programme: après-ski, daily.

Salzburg lodge delicacies.



### Gamskogelhütte

Tel.: +43-664-33 76 678

Tobogganing evenings – Carinthian specialities.



### Wilderer Alm

Tel.: +43-676-680 38 42 -specialities from the Lungau region. Open daily. Après-ski as of 3.30 pm.



### Pritzhütte

Tel.: +43-664-98 41 583

Horse drawn sleigh rides, Carinthian alpine snacks, spare ribs, knuckle of pork and fondue. You are kindly requested to reserve in advance.



### Hintereggers Aineck

Tel.: +43 664 964 23 38

The most thrilling ski & gourmet hut on the Katschberg is located right by the valley terminal of the Aineck lift. This daytime ski hut turns into an elegant rustic restaurant with alpine flair in the evenings... Enjoy flame-grilled delights, fondues, hot-stone delights or OX steaks XO grilled over an open fire. Open daily from 10 am until the last customer leaves.



### Erlebnisgasthof Alpina

Tel.: +43-4734-350

Steakhouse; special coffees and cakes, local specialities, pork ribs and scampi meals subject to prior reservation.



### Alpengasthof Bacher

Tel.: +43-4734-318

Sundeck right by the Tschaneck piste.

Traditional pork meal once a week.

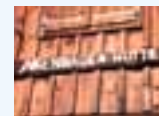
Pasta buffet once a week. Pork ribs and knuckle of pork meals subject to prior reservation.



### Asenbauerhütte

Tel.: +43-664-162 4528

Rustic ski hut situated right by the Sonnalnm lift. Sun deck, delicious local fare and our spare ribs speciality (subject to prior notice). We look forward to serving you!



### Häsenstall – Your après-ski school

Tel.: +43 664 964 23 38

Stylish après-ski pleasure with wonderful highlights served up each and every day. A very friendly atmosphere, good mood and surprises make all the difference! Open daily from 3 pm. We look forward to seeing you!



## RENNWEG:

### Gasthof Katschtalerhof

Tel.: +43-4734-210

Family-run country inn, fireside lounge, traditional Carinthian fare.



### Gasthof Post

Tel.: +43-4734-204

Carinthian inn for well over 300 years catering to hungry, thirsty and tired travellers; top-class Carinthian restaurant. Awarded the AMA "Culinary Heritage" gastro seal of approval for using regional produce.



### Café Cappucino

Tel: +43-650-986 33 06 - Coffee specialities, snacks.

### Strafnerstadl

Tel.: +43-4734-29971 or  
+43-676-521 3756

Restaurant / café / vinothèque. Wonderful atmosphere, excellent regional fare, impressive choice of wine. Closed Wednesdays. Superb conservatory for non-smokers.



### Gasthof Alpenglüh'n

Tel.: +43-4734-231

Rustic 'smoke kitchen', traditional Carinthian fare, homemade produce, 'stung' beer, spa and sauna zone.



### Bonner Hütte

Torchlight hikes to the romantic snowy Bonner Hütte, a restaurant that takes great pleasure in meeting all your culinary desires (e.g. spare ribs, knuckle of pork and alpine fondue, etc., subject to prior order). Please make your reservations one day before by calling +43-676-510 21 14 or +43-664-162 45 28.



### Gasthof Pirkerwirt

Tel.: +43-4734-242

Family-run inn with private farm, prior reservation requested.



### Café-Bäckerei-Grosek

Tel: +43-4734-324 - Exquisite cakes and pastries.

### Campingtüberl

Tel.: +43-4734-663 oder 229  
Hearty traditional fare.



### Schoberblickhütte

Tel.: +43-676-964 22 29

Rustic hut situated in the heart of the protected Pöllatal nature reserve. Carinthian specialities and excellent home cooking. Horse drawn sleigh rides available subject to prior reservation. Superbly groomed cross-country skiing slope, easy to reach by car.



## LIVE MUSIC IN DECEMBER 2011

**LÄRCHENSTADL** - Live music as of 8 pm  
on 1 Dec, 8 Dec, 15 Dec and 22 Dec 2011.

**WILDERER ALM** - Live music as of 8 pm  
on 3 Dec, 10 Dec and 17 Dec 2011.

**PIZZERIA STAMPERL** - Live music as of 8 pm  
on 2 Dec, 9 Dec, 16 Dec and 23 Dec 2011.

**HINTEREGGERS AINKEHR** - Live music as of 8 pm  
on 4 Dec, 11 Dec and 18 Dec 2011.

**HOTEL CRISTALLO** - Live music as of 8 pm  
on 12 Dec 2011 and 19 Dec 2011.

## A

### ACCOMMODATION CATALOGUE

All accommodation (hotels, inns, guesthouses, private rooms, lodges and camping sites, etc.) have been compiled for you in a special catalogue which is available from the two tourist offices in Katschberg and Rennweg, and from your accommodation provider.

### AMBULANCE

Emergency number: 144

### ATMs

Katschberg: FRESCH:UP sports shop  
 Rennweg: right at the Raiffeisenbank Liesertal

## B

### BAKERIES

Rennweg: **Café-Bäckerei-Grosek tel:** +43-4734-324  
 St. Michael: **Café-Bäckerei Di Bora tel:** +43-6477-8302

### BANKS

Rennweg: **Raiffeisenbank tel:** +43-4734-221  
 St. Michael: **Raiffeisenbank tel:** +43-6477-8081  
**Hypobank tel:** +43-6477-861 10

### BIO-LIFT

During the day you can go on an off-piste tour across the Tschaneck to the Pritzhütte and then have a horse drawn sleigh take you back to the Katschberg. This lift is also better known as the 'Katschberg bio lift'. For details please call +43-664-284 45 83.

### BREAKDOWN SERVICES

**ARBÖ:** 123, **ÖAMTC:** 120  
**Rudolf Mandl:** tel: +43-6477 7304 (breakdown and towing service only in Katschberg)

### BUS SERVICES

Details of bus services are available from the two tourism offices [www.postbus.at](http://www.postbus.at)

## C

### CABLEWAYS – BERGBAHNEN KATSCHBERG

Contact and inquiries please call +43-4734-83 888-0.  
 Fax: +43-4734-83 8884, e-mail: [info@katschi.at](mailto:info@katschi.at).  
 Internet: [www.katschi.at](http://www.katschi.at) or [www.katschbergbahnen.at](http://www.katschbergbahnen.at).  
 Our services operate from the end of November 2011 until 15 April 2012.



### CAMPSITE

Rennweg: **Ramsbacher summer and winter campsite**  
 Gries 53, 9863 Rennweg, tel: +43-4734-663;  
 fax: +43-4734-8239; e-mail: [camp.ram@utanet.at](mailto:camp.ram@utanet.at);  
 Internet: [www.camp-ram.at](http://www.camp-ram.at)  
 80 pitches with electric and water hook-ups; satellite TV. State-of-the-art sanitary facilities; washing machines and washing up room; disabled sanitary facilities. Café-restaurant; children's playground.



### CAR HIRE

St. Michael: **Neubauer** tel: +43-6477 775 50

### CHURCH SERVICES

Rennweg: St. Georgen, Saturdays at 7 pm  
 St. Peter, Sundays at 08.30 am



## CROSS-COUNTRY SKIING TRAILS

**Katschberg:** 16 km there and back; 1,640 to 1,800 m above sea level. This wonderful high altitude trail starts at the P3 car park on the Katschberg-höhe (1,641 m above sea level). From there the route leads through constantly changing terrain on the Aineck slope to the Brantweinerhütte and Kölblbacherhütte, then onwards to the Meissnitzeralm hut and the turning point of the Aineckstube (1,532 m above sea level) at the Aineck lifts. The skating and diagonal trail features challenging uphill and downhill sections. Located along a high mountainside and in woodland, the route offers tremendous panoramic views. Refreshment stop on the way!



**Rennweg:** 6 km there and back; a wonderful trail from the BBQ area through to the Pöllatal nature and countryside reserve. The Schoberblick-hütte is an excellent place to stop off for refreshments!

## D

### DENTIST

**Rennweg:** **Dr. Hans-Ulrich Müller** dental practice  
Dentist specialising in teeth, mouth and jaw com-  
plaints - 9863 Rennweg 77, Tel. +43-4734/44712  
www.docmueller.at | e-mail: optimist@sol.at

### DOCTORS

#### General practitioners:

**Katschberg:** **Joint practice**  
**Dr. Betzler & Dr. Neumayer,**  
Katschberghöhe 4,  
Surgery hours daily 9 am to 5 pm  
GP & accident surgery  
Tel: +43-4734-240 24 | www.ordination-katschberg.at.  
In urgent cases you can reach us by  
calling +43-664 371 90 62.

**Rennweg:** **Dr. Reinhold Luger**  
tel. +43-4734 605 or +43-676 415 72 57

**St. Michael:** **Dr. Nihad Hatahet**  
tel. +43-6477 8328 or +43-676 336 93 34  
**Dr. Peter Koller tel:** +43-6477-8350

## DRUG STORES

**Tamsweg:** **DM-Drogeriemarkt**  
Hauptplatz 136, tel: +43-6474-6906

## DIALLING CODE TO

B: +32	CH: +41	CZ: +420
D: +49	DK: +45	F: +33
GB: +44	H: +36	HR: +385
I: +39	NL: +31	S: +46
SK: +420	SF: +358	Slo: +386

## E

### EVENTS

See earlier section or visit [www.katschberg-rennweg.at](http://www.katschberg-rennweg.at)  
The events schedule is available from the tourism offices.

## F

### FARMERS' MARKET

**Gmünd:** every SAT 8-11 am in front of the Rathaus  
(little Liesertal farmers' market)

**St. Michael:** every FRI 2.30-5 pm in the Anthoferhaus /  
next to the church (farmers' shop)

### FARM PRODUCE, DIRECT MARKETING

**The Pirker family,** Laußnitz 1, A-9863 Rennweg.  
Tel: +43-4734-8357 or +43-664 877 12 64.

**The Ramsbacher family,** St. Georgen, A-9863 Rennweg.  
Tel: +43-676-8355 6698.

## G

### GARDENING

**St. Michael:** **Arnold Moser,** tel: +43-6477-8495

### GETTING HERE

[www.katschberg-rennweg.at](http://www.katschberg-rennweg.at)

## H

### HAIRDRESSERS

**Rennweg:** **Eveline Jehsner, call-out hairdresser,**  
tel. +43-664-426 45 37

**Rennweg:** **HAARgenie**  
tel. +43-4734-29 946

## HORSE RIDING

### Alpine horse riding centre

Info: Andreas Neuschitzer +43-664-28 44 583  
 Horse drawn sleigh rides to the romantic Pritzhütte • open country horse riding • riding lessons (indoor arena and outdoors) • pony riding • equestrian guesthouse

## HOSPITALS

Spittal an der Drau: tel: +43-4762-622  
 Tamsweg: tel: +43-6474-7381

## I

### ICE SKATING RINK

Rennweg: at the school sports ground in Rennweg  
 Katschberg: behind the Katschberg tourist office  
 Illuminated until 10 pm

### INDOOR SWIMMING POOL

Tamsweg: For details call +43-6474-231 20. Indoor and outdoor pool with adventure and vitality zones; children's area with slide.

Spittal: For details please call +43-4762-5650 313  
 Sauna; steam bath; relaxation and fresh air rooms; solarium; massage and massage jets; dedicated area for small children.

Katschberg: in Hotel Cristallo, Tel: +43-4734-319 540  
 Adventure pools, sauna zone, fitness centre, massages, beauty treatments.

## INFORMATION

Katschberg: **Katschberg tourist office** tel: +43-4734-630  
 Rennweg: **Rennweg tourist office;** tel: +43-4734-330  
 St. Michael: **St. Michael tourist office;** tel: +43-6477-8913

## INTERNET

Katschberg: tourist office (EUR 0.10 / minute)  
 Rennweg: local council office (free)



## K

### KATSCHI'S CHILDREN'S WORLD

'Katschi's Children's World' – amusing talking figures invite children to practise their first swings and turns in the snow on a dedicated children's piste.

### KEYCARDS

Use the contact-free KeyCard data carrier for your lift ticket; supplement of EUR 5 payable. (You do not have to insert the card. Simply carry the KeyCard in a pocket to the top left of your ski suit – the registration will take place and the turnstile will open contact-free via a radio link). Obviously you can also use the tried and tested magnetic card (no supplement required, but you need to insert the card).

KeyCards can be returned to Pizzeria Stamperl, Otto's ski school, the Katschberg and Rennweg tourism offices, Hotel Hinteregger, Adlerhorst and Fresch:up.

## L

### LENDING LIBRARY

Volksschule Rennweg Tel. +43-4734-2165  
 Opening times: FRI: 6-8 pm; WED: 8-10 am and 2-4 pm;  
 THU: 9-10.30 am Tel. +43-4734-2165

### LIFT TICKET OFFICES

Tschaneck ticket office: open from 8.45 am to 4 pm  
 Aineck ticket office: open from 8.45 am to 4 pm  
 Saturdays from 8.45 am to 4.30 pm

### LOST AND FOUND

Rennweg: tel: +43-4734-208 16



## M

### MASSAGE

**Katschberg: Hotel Sonnalm: Elke Rotschopf**

Tel.: +43-4734-491 438

Choose from a wide range of massages: a special back massage, sports massage, relaxation massage, reflexology massage or a mud or hay pack.

**Katschberg: Hotel Cristallo:**

Tel.: +43 (0) 4734-319 540

Wide range of massages and beauty treatments.

**Katschberg: Gasthof Bacher:**

massages, cosmetics & pedicure.

Tel. +43 (0) 4734-318.

**Rennweg: Massage Bernthaler**

Tel.: +43 (0) 676-76 17 620.

### METALSMITHS – ARTISTIC METAL DESIGN

Rennweg: Gerhard Peitler.

Rennweg 50 - Tel.: +43-4734-305

### MILK VENDING MACHINE

24 hours a day: fresh alpine pasture milk at the fire brigade building in Rennweg. Call +43-4734-368.

### MOUNTAIN RESCUE

For details please call 140

## N

### NEWSLETTER

You're more than welcome to subscribe to our newsletter at [www.katschberg-rennweg.at](http://www.katschberg-rennweg.at)!

### NON-SKIERS

Non-skiers may only travel on the Aineckbahn. They are not allowed to use any other cableway service.

Ascent: Adults EUR 11.50 Children EUR 6,50

Ascent and descent: Adults EUR 14.00 Children EUR 7.50

### NORDIC WALKING

Details of Nordic walking routes are available from the Katschberg and Rennweg tourism offices.

## O

### OPTICIANS

Gmünd: **Optik Schiffer GsmgH & CoKG**

Hauptplatz 18, Tel.: +43-4732-3898

## P

### PANORAMIC CAMERA

Self-guided camera at the Sonnalm and Tschaneck lifts. For details please visit the website at [www.katschi.at](http://www.katschi.at).

### PHARMACISTS

Rennweg: **Dr. Reinhold Luger**

tel: +43-4734-605 or +43-676 415 72 57

**Sonja Lackner, dispensing chemist**

tel: +43-664 94 73 934

St. Michael: Apotheke **'Zum hl. Michael'**

tel. +43-6477 8204 fax ext. 4

### PHOTO DEVELOPING

Rennweg: **Adeg Pleschberger** tel: +43-4734-340

St. Michael: **Roland Holitzky** tel: +43-6477-7630

### PHOTOPOINT

Photo opportunity at the Tschaneck mountain terminal. Take photos of the skiing area with our Katschi, look at them online at home and send them off. [www.katschpix.at](http://www.katschpix.at)



### PISTE INFO

All pistes are prepared with artificial snow • 70 km of pistes covering all levels of difficulty (10 km difficult, 46 km intermediate and 14 km easy), high transportation capacity (25,100 persons/hour), scarcely any waiting times. Pistes superbly groomed every day • pistes awarded Carinthian quality hallmark • good, clear piste marking.

### POLICE

Rennweg: tel: +43-4734-233

### POSTBUS SERVICES

Postbus timetables are available from the tourism offices. For further details please visit the website at [www.postbus.at](http://www.postbus.at).

## POSTAL FEES

Within Austria: postcard + letter EUR 0.62 / abroad: EUR 0.70.

## POST OFFICE SERVICE AT RENNWEG TOURISMUS OFFICE

Rennweg: Call +43-4734-330

## R

## RAIL ENQUIRIES

For information at local rate, call 051717 or visit [www.oebb.at](http://www.oebb.at)

## RAILWAY STATION

Spittal an der Drau: tel: +43-4762-3976. Details of rail connections are also available from the Internet at [www.oebb.at](http://www.oebb.at).

## S

## SCHNAPPS DISTILLERY

Zederhaus: **Moser** tel: +43-6478-547  
Internet: [www.sol.at/moser.edelbraende](http://www.sol.at/moser.edelbraende)

## SKI BUS

The free ski bus runs almost hourly every day on the route from St. Margarethen to St. Michael and Katschberg, and between Rennweg and Katschberg (see timetable). The timetable is available from the two tourism offices on the Katschberg and in Rennweg.

## SKI & SNOWBOARD STORAGE

Good news on the Katschberg! You can store your ski and snowboard equipment right in a heated room below the tourism office for a small fee. The deposit comes to EUR 10. Details are available from the Katschberg tourism office.

## SNOW CHAINS

Rennweg: **Autohaus Brandstätter**  
Tel: +43-4734-215

## SNOW REPORTS

We publish daily snow reports on our website at [www.katschberg-rennweg.at](http://www.katschberg-rennweg.at). Further details about snow reports are available from the dedicated Snowline. Call +43-4734-666.

## SHOPPING FACILITIES

Katschberg: food store:  
**Kaufhaus Lärchenhof** tel: +43-4734-250-43  
Clothes shops:  
**Boutique Creativ** tel: +43-4734-608  
**Sport Friedrich** tel: +43-4734-470  
**Sport Erni** tel: +43-4734-320  
**Fresch:up** tel: +43-4734-29 900  
**Mini sports shop at Katschberg ski & sports school:**  
+43-4734-83 881

Rennweg: Food stores and sports shops:  
**Adeg-Markt Schiefer** tel: +43-4734-214  
**Adeg-Markt Pleschberger** tel: +43-4734-340  
**Sport Schiffer** tel: +43-664-35 26 206

## T

## TAXI

Rennweg: **Ramsbacher** tel: ++43-4734-228 or  
tel: +43-664-200 84 12

St. Michael: **Gfrerer** tel: +43-664-450 48 20  
**Bacher Reisen** tel: +43-6477 81 11  
**Lehenauer** tel: +43-676-311 83 11

## TELEPHONE INQUIRIES

11 88 99 (EU and neighbouring countries)  
0900 11 88 77 (worldwide; calls charged)

## TOLL CHARGES – TAUERN AUTOBAHN

St. Michael: toll station, Tel: +43-6477-8001. Single leg by car:  
EUR 5 for use of one tunnel, EUR 10 for use of both tunnels.

## TRANSFER - AIRPORT

Pick-up from Klagenfurt airport or Salzburg airport.  
Details available from [www.kaernten-transfer.at](http://www.kaernten-transfer.at) or  
[www.salzburg-transfer.at](http://www.salzburg-transfer.at) and [www.lungautaxi.info](http://www.lungautaxi.info).



## V

### VET

St. Michael: **Dipl.-Tierarzt Josef Dorfer**  
tel: +43-6477-76 37

### VIGNETTE (AUTOBAHN STICKER)

Rennweg / St. Peter: You can get your motorway sticker (vignette) from Gasthof Alpenglühn or Adeg Pleschberger.  
St. Michael: petrol stations.

1-year vignette	EUR 76.50
2-month vignette	EUR 23.00
10-day vignette	EUR 7.90

## W

### WEATHER REPORTS

To hear the latest weather report, call 0900 91 15 66 (calls charged). Daily holiday weather reports are also available from the two tourism offices on the Katschberg and in Rennweg, on the Internet at [www.katschberg-rennweg.at](http://www.katschberg-rennweg.at) or by calling the special snowline on +43-4734-666.

### WCs

Katschberg: P3 car park - Katschberg tourist office  
Tschaneck lift ticket office  
Aineck lift ticket office  
Rennweg: Rennweg municipality office

### WOOD CARVINGS

Rennweg/Mühlbach:  
**Alfred Peitler**, Mühlbach 14 - Contact: +43-4734-477  
**Adrian Heymans**, Mühlbach 8 - Contact: +43-4734-314



# Ski bus timetable



Schibus Oberdorf - Rennweg - Katschberghöhe				Schibus Katschberghöhe - Rennweg - Oberdorf			
A	A	B	A	A	A	B	A
Oberdorf	7:47	8:55	9:45	11:45	13:40	-	-
Gries Gh. Ramsbacher	7:51	8:57	9:47	11:49	13:44	-	-
Gries Seiler	7:52	8:49*	-	11:50	13:45	-	-
Lieserhaus	7:53	8:47**	-	11:51	13:46	-	-
St. Peter	-	9:00	-	-	-	-	-
Rennweg Schule	7:54	9:08	9:58	11:53	13:48	-	-
Rennweg PA	8:00	9:10	10:00	11:54	13:49	15:50	16:50
Rennweg Haus Josefín	8:02	9:12	10:02	11:55	13:50	-	-
St. Georgen Abzw.	8:05	9:17	10:07	12:00	13:52	15:52	16:52
Mühnbach, Saraberg	8:06	9:19	10:09	12:02	13:54	15:54	16:54
Falkensteiner Funimotion	8:13	9:28	10:18	12:11	14:03	16:03	17:03
Katschberghöhe	8:15	9:30	10:20	12:15	14:05	16:05	17:05

\* = Lieserhaus 8:47 und Gries Seiler 8:49 nur an Werktagen  
 \*\* = ab St. Peter 9:50 mit tel. Voranmeldung unter 0664 200 8412

A = täglich vom 4.12.2011 bis 15.4.2012  
 B = täglich vom 25.12.2011 bis 8.1.2012, vom 5. bis 26.2. und 1. bis 10.4.2012 sowie auf Bedarf für Schüleggruppen bei Voranmeldung im Tourismusbüro, 04734/330

## Schibus Katschberg - St. Margarethen/Lungau (Fahrplanauszug)

gültig täglich vom 24.12.2011 bis 9.4.2012.

Katschberghöhe	8:40	9:55	10:55	11:55	12:55	13:55	14:55	15:55	16:25	16:55
St. Michael/Lungau Hapimag	8:55	10:10	11:10	12:10	13:10	14:10	15:10	16:10	16:40	17:10
St. Michael/Lungau Speierecklift	8:59	10:14	11:19	12:14	13:14	14:14	15:14	16:14	16:44	17:14
St. Margarethen/L. Aineckbahn	-	10:25	11:25	12:25	13:25	14:25	15:25	16:25	-	-
St. Margarethen/L. Aineckbahn	-	-	9:25	10:25	11:25	12:25	13:25	14:25	15:25	16:25
St. Michael/Lungau Speierecklift	8:22	9:02	9:32	10:32	11:32	12:32	13:32	14:32	15:32	16:32
St. Michael/Lungau Hapimag	8:25	9:05	9:35	10:35	11:35	12:35	13:35	14:35	15:35	16:35
Katschberghöhe	8:40	9:25	9:55	10:55	11:55	12:55	13:55	14:55	15:55	16:55

## Schibus Ried - Brugg - Katschberghöhe

W	SF	M-F	B	tägl.	M-F
Ried	8:43	9:43	11:53	16:33	17:38
Brugg	8:44	9:44	11:54	16:32	17:37
Rennweg Sportplatz	8:45	9:45	11:54	16:31	17:36
Rennweg PA	9:10	-	11:54	16:30	17:30
Rennweg Haus Josefín	9:12	-	11:55	16:29	17:29
Katschberghöhe	9:30	9:55	12:15	16:10	17:10

gültig vom 25.12.2011 bis 15.4.2012

M-F = Montag bis Freitag wenn Werktag

M-F-B = Montag bis Freitag wenn Werktag vom 25.12.2011 bis 8.1.2012, 5.2. bis 26.2. und 1.4. bis 10.4.2012

W = Montag bis Samstag wenn Werktag

SF = an Sonn- und Feiertagen

Betriebsführung:



bergbahnen  
katschberg  
www.katschberg.at



ÖBB-Postbus GmbH

Körnerstr. 11, 9800 Spittal/Drau

Tel.: 04762/5214-26, service@postbus.at

Kundeninformation: 0810 222 333-8

(täglich von 06:00 bis 20:00 Uhr)

www.postbus.at/kaernten

## Katschberg Evening Out Shuttle

EUR 4 pp

### Dep. Rennweg Municipal Office to the Katschberghöhe

C	19:35
A	21:00
B	22:30

### Return from the Katschberg to Rennweg

C	19:45
A	21:15
B	23:15
A	00:30
C	02:00
D	03:15

### Return from the Katschberg to St. Michael

C	19:45
A	21:15
B	22:45
A	00:30
C	02:00
D	03:15

A: Daily from 25 Dec 2011 to 6 Apr 2012 B: Daily from 25 Dec 2011 to 6 Jan 2012  
 C: Daily from 25 Dec 2011 to 25 Mar 2012 D: Service operates during (live music) events  
**Mon and Thu: night time skiing service: dep. 19.25 from Oberdorf (Gries-Rennweg-Katschberg)**

## Family feel-good region Katschberg-Rennweg

- around 100 km of superbly signposted hiking trails.
- mountain biking and Nordic walking at pleasant temperatures in an Alpine climate.
- first-class spa facilities.
- choo-choo train in the Pöllatal nature and countryside reserve
- AINECK cableway operates in summer.
- 18-hole golf course (St. Michael).
- 325 m<sup>2</sup> outdoor paddling pool with children's paddling pool and large sunbathing lawn; mini golf and table tennis.
- the scenic jewels of the Pöllatal, Gontal and Laussnitztal valleys.
- the valley of 1,000 orchids - the Wolfsbachtal.

- Floral Rennweg. A recipient of multiple national and international distinctions for the appearance of the village, and awarded the "Entente Florale" prize in 2011.
- Alpine horse riding centre / Katschberg.
- "Katschhausen" children's adventure world.
- Katschberg Adventure Park.
- Katschberg pony pasture.
- The renovated Katschberg sports ground features a tennis court, beach volley ball court, football ground, sand play area and a multi-purpose area.

Detailed information is available from the tourism offices in Rennweg and on the Katschberg, or from [www.katschberg-rennweg.at](http://www.katschberg-rennweg.at).



## “Katschhausen” children’s adventure world at the Katschberg equestrian sports centre

In the “Katschhausen” children’s adventure world visitors of all ages can immerse themselves in the “Katschling family” world with its outstanding array of natural phenomena. The modern and family-friendly playground also has its very own children’s story with Father, Mother and Uncle Katschling as well as the Katschlingettes and Katschling Junior. The “Katschlings” accompany children at quality stops for fun and games which feature slides and seesaws, a colour workshop, bridges and a water world, a petting zoo and a spot for pleasant picnics. They also help children to understand natural phenomena such as rainbows and moors in an entertaining and enjoyable way.

For further details please contact:  
 Tourismusregion Katschberg-Rennweg  
 A-9863 Rennweg, Katschberghöhe 30  
 Tel.: +43/(0)4734/630 oder -3300  
 Fax: +43/(0)4734/753 oder -3305  
 E-Mail: office@katschberg-rennweg.at  
 www.katschberg-rennweg.at



## *Kuschelalm on the Katschberg*

We have long believed that our alpine pastures are so gorgeous, pristine and innocent that there is no room for sin. So it’s only right that our very own “Kuschelalm” is the perfect place for a kiss and a cuddle. Frogs turn into princes and women into Queens of Hearts when they embrace tenderly in a loft bed. From these snuggle nests and wooden loungers you can enjoy fantastic views across the Liesertal valley, kick back and relax to your heart’s content. Simply hire your snuggle duvets, blankets and pillows at the entrance to the Kuschel-Alm.



## **Austria’s biggest adventure park on the Katschberg**

It’s quite a challenge. You need to negotiate over 150 stops, created out of wooden elements and cables, on this course with its different levels of difficulty. To start from below and to work up: Little adventurers and beginners have a choice of three blue courses (2–3 metres above ground level). Things get a bit more challenging on the three red courses (3–6 metres above the ground). The black course (5–10 m above ground level) might cause you to feel butterflies in your stomach while the extreme course (15–20 above the ground) is really reserved purely for die-hard enthusiasts!



Nice to see you!



Subject to change!

RENNWEG am   
**KATSCHBERG**  
[www.katschberg.at](http://www.katschberg.at)

Tourismusregion Katschberg-Rennweg Marketing GmbH  
Katschberghöhe 30, 9863 Rennweg  
Tel. +43 / (0)4734 / 630 or 3300  
Fax +43 / (0)4734 / 753 or 3305  
e-mail: [office@katschberg-rennweg.at](mailto:office@katschberg-rennweg.at)  
[www.katschberg-rennweg.at](http://www.katschberg-rennweg.at)

